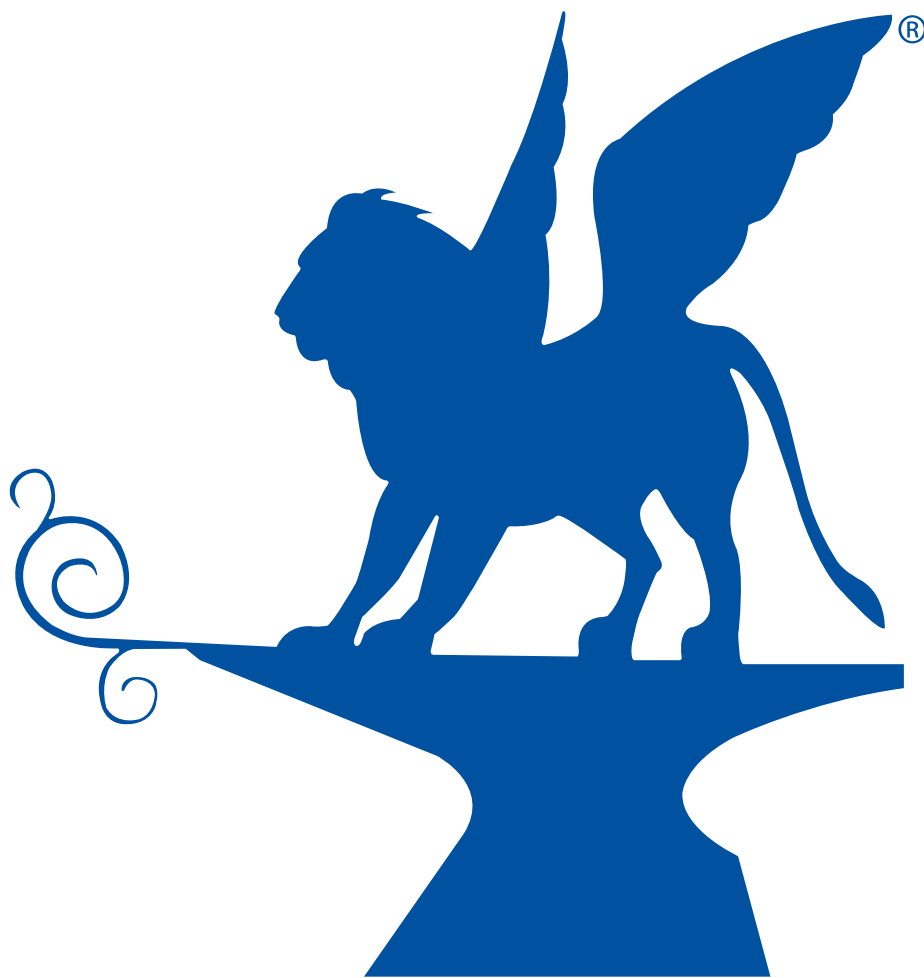




ARTEFERRO
Compendium

Ferro Battuto, Wrought Iron, Hierro Forjado, Schmiedeeisen,
Fer Forge, Ferro Forjado, Smidesjarn, Ковка, Kovano Zeljezo, Fer Forjat

RICCI - SCROLLS



ind.i.a.® S.
P.
A.
industria italiana arteferro

TERMINALI
BATTUTI A CALDO



HOT FORGED
ENDS



SEZIONE - SECTION	H 270 mm L 110 mm Cod.art./Art.no.	H 110 mm L 60 mm Cod.art./Art.no.	H 150 mm L 110 mm Cod.art./Art.no.
∅ 12 x 6 mm	80/A/1	80/A/3	80/A/13
∅ 14 x 6 mm	80/A/28	80/A/29	80/A/30
∅ 16 x 4 mm	80/A/21	80/A/22	80/A/23
∅ 16 x 6 mm	80/A/14	80/A/15	80/A/16

TERMINALI
TRANCIATI A FREDDO

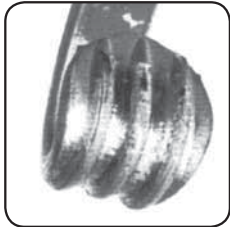


END PIECES COLD CUT



SEZIONE SECTION	H 360 mm L 120 mm Cod.art./Art.no.	H 360 mm L 120 mm Cod.art./Art.no.	H 290 mm L 120 mm Cod.art./Art.no.	H 220 mm L 108 mm Cod.art./Art.no.
∅ 8 x 8 mm	74/6	74/12	74/18	74/24
∅ 10 x 5 mm	74/1	74/7	74/13	74/19
∅ 12 x 6 mm	74/2	74/8	74/14	74/20
∅ 14 x 6 mm	74/25	74/27	74/26	74/28
∅ 16 x 4 mm	74/3	74/9	74/15	74/21
∅ 20 x 4 mm	74/4	74/10	74/16	74/22
∅ 20 x 6 mm	74/5	74/11	74/17	74/23

TERMINALI
BATTUTI A CALDO

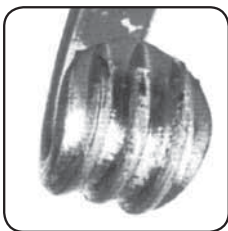


HOT FORGED
ENDS



SEZIONE SECTION	H 150 mm L 75 mm Cod.art./Art.no.	H 130 mm L 75 mm Cod.art./Art.no.	H 160 mm L 75 mm Cod.art./Art.no.	H 180 mm L 80 mm Cod.art./Art.no.	H 270 mm L 120 mm Cod.art./Art.no.	H 360 mm L 125 mm Cod.art./Art.no.
∅ 10 × 10 mm	-	-	-	-	88/H/1	-
∅ 12 × 6 mm	88/H/2	88/H/3	88/H/4	-	-	-
∅ 20 × 4 mm	-	-	-	88/H/6	-	88/H/5

TERMINALI
BATTUTI A CALDO



HOT FORGED
ENDS



SEZIONE SECTION	H 105 mm L 70 mm Cod.art./Art.no.	H 120 mm L 75 mm Cod.art./Art.no.	H 140 mm L 95 mm Cod.art./Art.no.	H 150 mm L 65 mm Cod.art./Art.no.	H 190 mm L 70 mm Cod.art./Art.no.
∅ 12 × 6 mm	80/A/9	80/B/8	80/A/10	80/A/11	80/A/12
∅ 14 × 6 mm	80/A/24	-	80/A/25	80/A/26	80/A/27
∅ 16 × 4 mm	80/A/17	80/B/3	80/A/18	80/A/19	80/A/20



ARTEFERRO

**TERMINALI
BATTUTI A CALDO**



**HOT FORGED
ENDS**

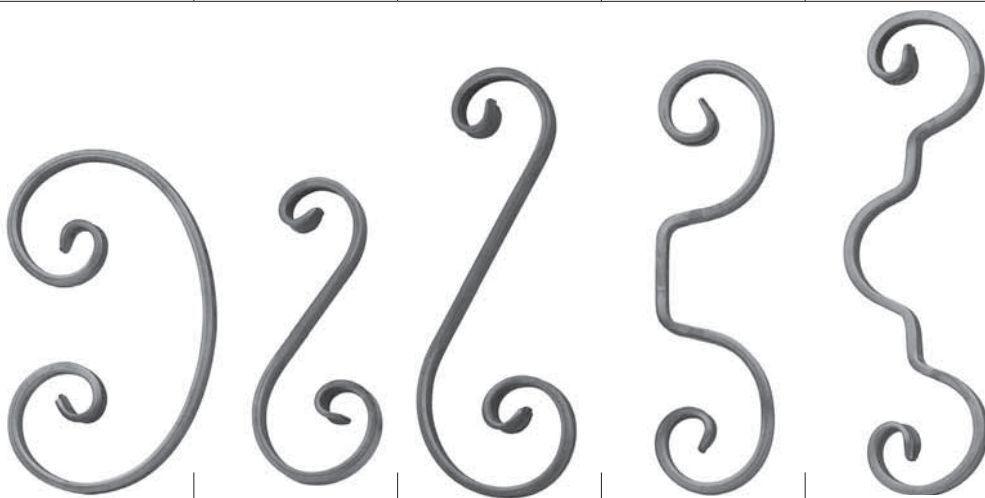


SEZIONE SECTION	H 95 mm L 65 mm Cod.art./Art.no.	H 110 mm L 70 mm Cod.art./Art.no.	H 120 mm L 60 mm Cod.art./Art.no.	H 130 mm L 80 mm Cod.art./Art.no.	H 145 mm L 80 mm Cod.art./Art.no.
∅ 12 x 6 mm	80/C/8	80/C/7	80/C/9	80/C/10	80/C/11
∅ 14 x 6 mm	80/C/18	80/C/17	80/C/19	80/C/20	80/C/21

**TERMINALI
BATTUTI A CALDO**



**HOT FORGED
ENDS**



SEZIONE SECTION	H 210 mm L 130 mm Cod.art./Art.no.	H 190 mm L 80 mm Cod.art./Art.no.	H 260 mm L 100 mm Cod.art./Art.no.	H 260 mm L 65 mm Cod.art./Art.no.	H 290 mm L 80 mm Cod.art./Art.no.
∅ 12 x 6 mm	80/C/12	80/C/14	80/C/13	80/C/16	80/C/15
∅ 14 x 6 mm	80/C/22	80/C/24	80/C/23	80/C/26	80/C/25

**TERMINALI
TRANCIATI A FREDDO**



END PIECES COLD CUT



SEZIONE SECTION	H 115 mm L 60 mm Cod.art./Art.no.	H 180 mm L 90 mm Cod.art./Art.no.
∅ 8 x 8 mm	78/6	78/12
∅ 10 x 5 mm	78/1	78/7
∅ 12 x 6 mm	78/2	78/8
∅ 14 x 6 mm	78/14	78/13
∅ 16 x 4 mm	78/3	78/9
∅ 20 x 4 mm	78/4	78/10
∅ 20 x 6 mm	78/5	78/11
∅ 30 x 8 mm	78/15	



ARTEFERRO

Art. GD264/4

∅ 14 x 8 mm
H 390 mm
L 120 mm



Art. GD264/3

∅ 14 x 8 mm
H 500 mm
L 115 mm



Art. GD264/2

∅ 14 x 8 mm
H 560 mm
L 315 mm



Art. GD264/1

∅ 14 x 8 mm
H 710 mm
L 370 mm



TERMINALI
BATTUTI A CALDO

HOT FORGED
ENDS



ARTEFERRO

Art. GD264/5

∅ 14 x 8 mm
H 180 mm
L 75 mm



Art. GD240/2

∅ 14 x 8 mm
H 320 mm
L 200 mm



Art. GD262/3
 ∅ 14 x 8 mm
 H 230 mm
 L 100 mm



Art. GD262/4
 ∅ 14 x 8 mm
 H 240 mm
 L 100 mm



Art. GD263/2
 ∅ 14 x 8 mm
 H 220 mm
 L 100 mm



Art. GD263/3
 ∅ 14 x 8 mm
 H 220 mm
 L 100 mm



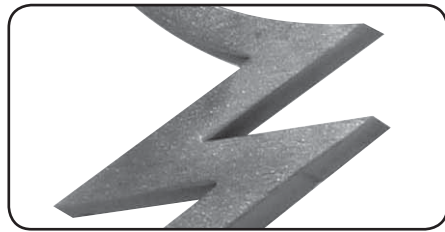
Art. GD263/1
 ∅ 14 x 8 mm
 H 270 mm
 L 95 mm



Art. GD262/2
 ∅ 14 x 8 mm
 H 215 mm
 L 110 mm



Art. GD262/1
 ∅ 14 x 8 mm
 H 200 mm
 L 105 mm



TERMINALI
 AVVOLTI A CALDO
 HOT ROLLED UP
 ENDS



ARTEFERRO



Art. 87/6
 ∅ 12 x 6 mm
 H 150 mm
 L 80 mm

Art. 87/5
 ∅ 12 x 6 mm
 H 160 mm
 L 90 mm



Art. 88/9
 ∅ 12 x 6 mm
 H 250 mm
 L 125 mm



Art. 87/1
 ∅ 12 x 6 mm
 H 130 mm
 L 80 mm

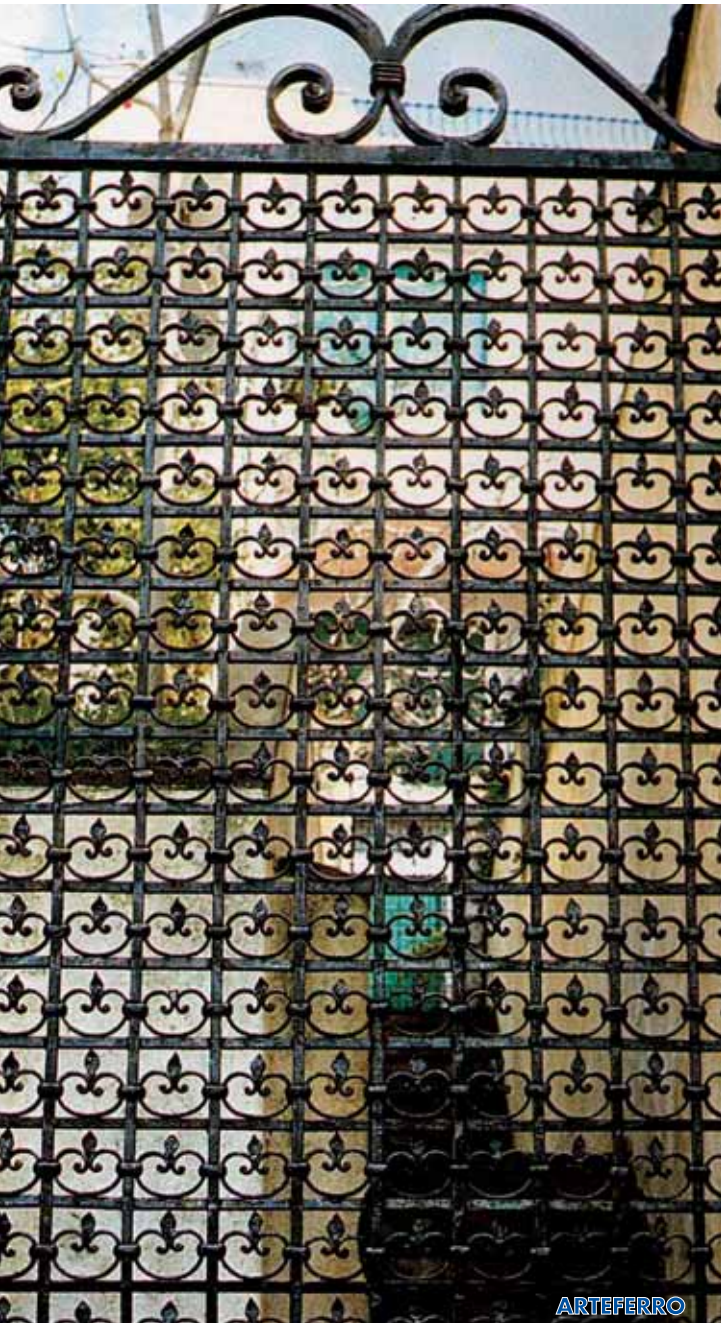
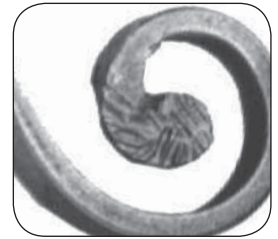


Art. 88/10
 ∅ 12 x 6 mm
 H 123 mm
 L 73 mm



Art. 88/A/3
 ∅ 12 x 6 mm
 H 110 mm
 L 70 mm

**RICCI
 STAMPATI A FREDDO
 COLD STAMPED
 SCROLL**



Art. 86/5
 ∅ 12 x 6 mm
 H 210 mm
 L 95 mm



Art. 90/1
 ∅ 10 x 5 mm
 H 180 mm
 L 155 mm



Art. 81/3
 ∅ 8 x 8 mm
 H 122 mm
 L 73 mm



Art. 81/5
 ∅ 8 x 8 mm
 H 122 mm
 L 73 mm

ARTEFERRO



SEZIONE SECTION	H 175 mm L 165 mm Cod.art./Art.no.	H 220 mm L 105 mm Cod.art./Art.no.	H 150 mm L 95 mm Cod.art./Art.no.	H 220 mm L 105 mm Cod.art./Art.no.	H 300 mm L 105 mm Cod.art./Art.no.
Φ 12 x 12 mm	94/P/5	94/Q/1	94/Q/5	94/P/1	94/P/9
Φ 14 x 14 mm	94/P/6	94/Q/2	94/Q/6	94/P/2	94/P/10



Φ 12 x 12 mm	94/P/7	94/Q/3	94/Q/7	94/P/3	94/P/11
Φ 14 x 14 mm	94/P/8	94/Q/4	94/Q/8	94/P/4	94/P/12



ARTEFERRO



Art. 1046/3
Φ 12 x 12 mm
H 455 mm
L 240 mm



Art. 1046/5
Φ 12 x 12 mm
H 445 mm
L 180 mm



Art. 1046/7
Φ 12 x 12 mm
H 105 mm
L 65 mm



Art. 1046/6
Φ 12 x 12 mm
H 160 mm
L 110 mm



Art. 1046/4
Φ 12 x 12 mm
H 320 mm
L 185 mm

TERMINALI
AVVOLTI A CALDO



HOT ROLLED UP
ENDS



SEZIONE SECTION	H 360 mm L 120 mm Cod.art./Art.no.	H 360 mm L 120 mm Cod.art./Art.no.	H 290 mm L 120 mm Cod.art./Art.no.	H 220 mm L 120 mm Cod.art./Art.no.	H 255 mm L 115 mm Cod.art./Art.no.
Ø 12 mm	1295/1	1295/2	1295/3	1295/4	1295/5
16 x 4 mm	1294/1	1294/2	1294/3	1294/4	-



ARTEFERRO

TERMINALI
AVVOLTI A CALDO



HOT ROLLED UP
ENDS



SEZIONE SECTION	H 115 mm L 60 mm Cod.art./Art.no.	H 180 mm L 90 mm Cod.art./Art.no.	H 350 mm L 120 mm Cod.art./Art.no.	H 210 mm L 120 mm Cod.art./Art.no.	H 220 mm L 70 mm Cod.art./Art.no.
Ø/dia 12 mm	1295/7	1295/6	-	-	-
16 x 4 mm	1294/9	1294/8	1294/6	1294/7	1294/5



Art. 1301/1
 ∅ 14 x 8 mm
 H 390 mm
 L 120 mm



Art. 1301/2
 ∅ 14 x 8 mm
 H 330 mm
 L 120 mm



Art. 1301/3
 ∅ 14 x 8 mm
 H 280 mm
 L 120 mm



Art. 1301/4
 ∅ 14 x 8 mm
 H 280 mm
 L 120 mm



Art. 1301/5
 ∅ 14 x 8 mm
 H 220 mm
 L 100 mm



Art. 1301/6
 ∅ 14 x 8 mm
 H 325 mm
 L 120 mm



Art. 1301/7
 ∅ 14 x 8 mm
 H 260 mm
 L 120 mm



Art. 1301/8
 ∅ 14 x 8 mm
 H 160 mm
 L 100 mm



Art. 1301/9
 ∅ 14 x 8 mm
 H 210 mm
 L 100 mm



Art. 1301/10
 ∅ 14 x 8 mm
 H 130 mm
 L 70 mm

**TERMINALI
 AVVOLTI A CALDO**



**HOT ROLLED UP
 ENDS**



Art. NEW0069
 ∅ 12 x 6 mm
 H 360 mm
 L 120 mm



Art. NEW0070
 ∅ 12 x 6 mm
 H 360 mm
 L 120 mm



Art. NEW0073
 ∅ 12 x 6 mm
 H 240 mm
 L 115 mm



Art. NEW0074
 ∅ 12 x 6 mm
 H 220 mm
 L 120 mm



Art. NEW0063
 ∅ 12 x 6 mm
 H 260 mm
 L 100 mm



Art. NEW0065
 ∅ 12 x 6 mm
 H 180 mm
 L 85 mm



Art. NEW0066
 ∅ 12 x 6 mm
 H 140 mm
 L 90 mm

Art. NEW0072
 ∅ 12 x 6 mm
 H 260 mm
 L 95 mm

Art. NEW0071
 ∅ 12 x 6 mm
 H 290 mm
 L 120 mm

Art. NEW0064
 ∅ 12 x 6 mm
 H 180 mm
 L 100 mm

Art. NEW0068
 ∅ 12 x 6 mm
 H 115 mm
 L 55 mm

Art. NEW0067
 ∅ 12 x 6 mm
 H 115 mm
 L 70 mm



Art. 1296/1
 □ 12 x 6 mm
 H 360 mm
 L 120 mm



Art. 1296/2
 □ 12 x 6 mm
 H 360 mm
 L 120 mm



Art. 1296/3
 □ 12 x 6 mm
 H 290 mm
 L 120 mm



Art. 1296/4
 □ 12 x 6 mm
 H 220 mm
 L 120 mm



Art. 623/1
 □ 12 x 6 mm
 L 3000 mm



Art. 1296/5
 □ 12 x 6 mm
 H 180 mm
 L 90 mm



Art. 1296/6
 □ 12 x 6 mm
 H 115 mm
 L 60 mm



Art. 1296/7
 □ 12 x 6 mm
 H 140 mm
 L 90 mm



Art. 1296/8
 □ 12 x 6 mm
 H 115 mm
 L 70 mm

**TERMINALI
 AVVOLTI A CALDO**



**HOT ROLLED UP
 ENDS**



Art. 1296/12
 Ø 12 mm
 H 135 mm
 L 90 mm



Art. 1296/13
 Ø 12 mm
 H 110 mm
 L 70 mm



Art. 1296/9
 Ø 12 mm
 H 260 mm
 L 120 mm



Art. 1296/10
 Ø 12 mm
 H 260 mm
 L 95 mm



Art. 1296/11
 Ø 12 mm
 H 260 mm
 L 100 mm



Art. 600/4
 Ø 12 mm
 L 3000 mm

**RICCI
SAGOMATO A FREDDO**

**COLD SHAPED
SCROLLS**



Art. 641/1
 \varnothing 12 x 6 mm
 H 105 mm
 L 70 mm



Art. 641/2
 \varnothing 12 x 6 mm
 H 130 mm
 L 70 mm



Art. 641/3
 \varnothing 12 x 6 mm
 H 115 mm
 L 60 mm



Art. 641/4
 \varnothing 12 x 6 mm
 H 180 mm
 L 90 mm



Art. 641/7
 \varnothing 12 x 6 mm
 H 360 mm
 L 120 mm



Art. 641/8
 \varnothing 12 x 6 mm
 H 360 mm
 L 120 mm



Art. 641/6
 \varnothing 12 x 6 mm
 H 290 mm
 L 120 mm



Art. 641/5
 \varnothing 12 x 6 mm
 H 220 mm
 L 120 mm



Art. 623/1



ARTEFERRO



**TERMINALI FUCINATI A
CALDO**

**HOT FORGED
ENDS**



Art. 88/P/1
 \varnothing 14 x 8 mm
 H 290 mm
 L 130 mm



Art. 88/P/3
 \varnothing 14 x 8 mm
 H 130 mm
 L 80 mm



Art. 88/G/3
 \varnothing 10 x 10 mm
 H 130 mm
 L 65 mm



Art. 88/P/2
 \varnothing 14 x 8 mm
 H 160 mm
 L 80 mm



Art. 78/B/1
 \varnothing 12 x 12 mm
 H 220 mm
 L 110 mm



Art. 78/B/2
 \varnothing 12 x 12 mm
 H 220 mm
 L 110 mm



Art. 78/B/3
 \varnothing 12 x 12 mm
 H 300 mm
 L 110 mm

Art. 6036/8
 \varnothing 14 mm
 H 160 mm
 L 80 mm

Art. 78/B/4
 \varnothing 14 x 14 mm
 H 220 mm
 L 110 mm

Art. 78/B/5
 \varnothing 14 x 14 mm
 H 220 mm
 L 110 mm

Art. 78/B/6
 \varnothing 14 x 14 mm
 H 300 mm
 L 110 mm



Art. NEW0061
 □ 16 x 6 mm
 H 260 mm
 L 125 mm



Art. NEW0062
 □ 16 x 6 mm
 H 190 mm
 L 70 mm



Art. NEW0012
 □ 16 x 6 mm
 H 260 mm
 L 130 mm



Art. NEW0060
 □ 16 x 6 mm
 H 350 mm
 L 130 mm



ARTEFERRO



Art. 1297/1
 Ø 10 mm
 H 360 mm
 L 120 mm



Art. 1297/2
 Ø 10 mm
 H 360 mm
 L 120 mm



Art. 1297/3
 Ø 10 mm
 H 290 mm
 L 120 mm



Art. 1297/4
 Ø 10 mm
 H 220 mm
 L 120 mm



Art. 1297/5
 Ø 10 mm
 H 220 mm
 L 120 mm



Art. 1297/6
 Ø 10 mm
 H 180 mm
 L 90 mm



Art. 1297/7
 Ø 10 mm
 H 120 mm
 L 60 mm

TERMINALI FUCINATI
 A CALDO
 HOT FORGED
 ENDS



Art. 1297/8
 Ø 10 x 10 mm
 H 360 mm
 L 120 mm



Art. 1297/9
 Ø 10 x 10 mm
 H 360 mm
 L 120 mm



Art. 1297/10
 Ø 10 x 10 mm
 H 290 mm
 L 120 mm



Art. 1297/11
 Ø 10 x 10 mm
 H 220 mm
 L 120 mm



Art. 1297/12
 Ø 10 x 10 mm
 H 220 mm
 L 120 mm



Art. 1297/13
 Ø 10 x 10 mm
 H 180 mm
 L 90 mm



Art. 1297/14
 Ø 10 x 10 mm
 H 120 mm
 L 60 mm

RICCI - SCROLLS



Art. 1144/3
 Ø 12 x 12 mm
 H 350 mm
 L 145 mm



Art. 1144/5
 Ø 12 x 12 mm
 H 335 mm
 L 170 mm



Art. 1144/6
 Ø 12 x 12 mm
 H 270 mm
 L 160 mm



Art. 1144/4
 Ø 12 x 12 mm
 H 225 mm
 L 105 mm



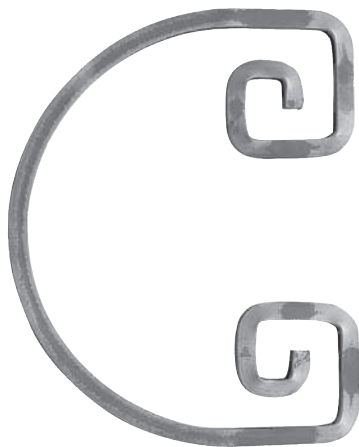
Art. 1144/1
 Ø 12 x 12 mm
 H 215 mm
 L 120 mm



Art. 1144/2
 Ø 12 x 12 mm
 H 185 mm
 L 95 mm



Art. 1145/2
 Ø 12 x 12 mm
 H 180 mm
 L 135 mm



Art. 1145/1
 Ø 12 x 12 mm
 H 280 mm
 L 195 mm



Art. 1143/1
 Ø 12 x 12 mm
 H 190 mm
 L 215 mm



Art. 1143/2
 Ø 12 x 12 mm
 H 300 mm
 L 185 mm



Art. 1143/3
 Ø 12 x 12 mm
 H 300 mm
 L 100 mm



Art. 1145/3
 Ø 12 x 12 mm
 H 315 mm
 L 170 mm



RICCI STAMPATI A FREDDO - COLD STAMPED SCROLL



Art. 73/1
 Ø 8 x 8 mm
 H 300 mm
 L 110 mm



Art. 73/2
 Ø 8 x 8 mm
 H 230 mm
 L 110 mm



Art. 38/5
 Ø 8 x 8 mm
 H 330 mm
 L 85 mm

Art. 38/7
 Ø 10 x 10 mm
 H 330 mm
 L 100 mm

Art. 38/8
 Ø 12 x 12 mm
 H 390 mm
 L 100 mm

Art. 38/6
 Ø 12 x 6 mm
 H 330 mm
 L 85 mm



Art. 73/3
 Ø 8 x 8 mm
 H 180 mm
 L 90 mm



Art. 81/1
 Ø 8 x 8 mm
 H 115 mm
 L 85 mm



Art. 89/2
 Ø 8 x 8 mm
 H 115 mm
 L 125 mm

Art. 89/3
 Ø 12 x 6 mm
 H 115 mm
 L 125 mm

TERMINALI BATTUTI A CALDO
 HOT FORGED ENDS



Art. 64/G/3
 Ø 12 x 6 mm
 H 150 mm
 L 105 mm



Art. 64/G/4
 Ø 12 x 6 mm
 H 105 mm
 L 60 mm



Art. 64/G/5
 Ø 12 x 6 mm
 H 105 mm
 L 60 mm



Art. 64/G/6
 Ø 12 x 6 mm
 H 230 mm
 L 50 mm

Art. 64/G/7
 Ø 14 x 6 mm
 H 150 mm
 L 105 mm

Art. 64/G/8
 Ø 14 x 6 mm
 H 105 mm
 L 60 mm

Art. 64/G/9
 Ø 14 x 6 mm
 H 105 mm
 L 60 mm

Art. 64/G/10
 Ø 14 x 6 mm
 H 230 mm
 L 50 mm

